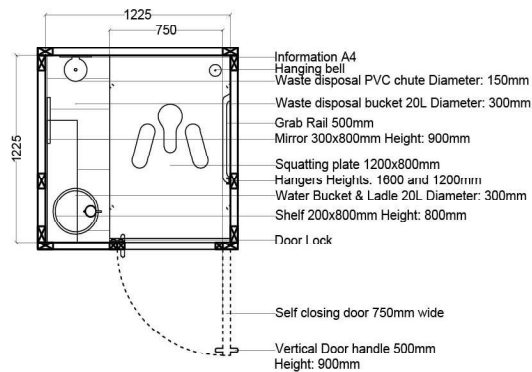
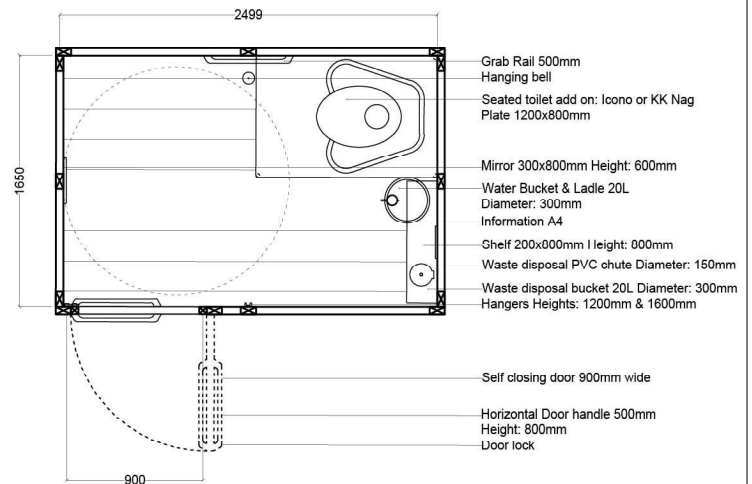
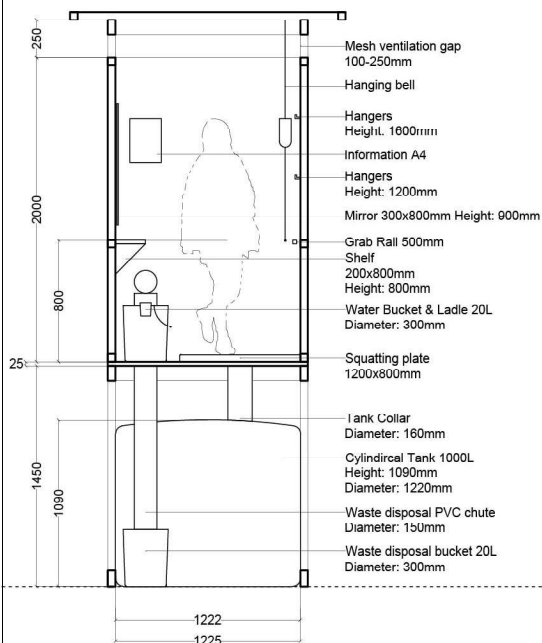
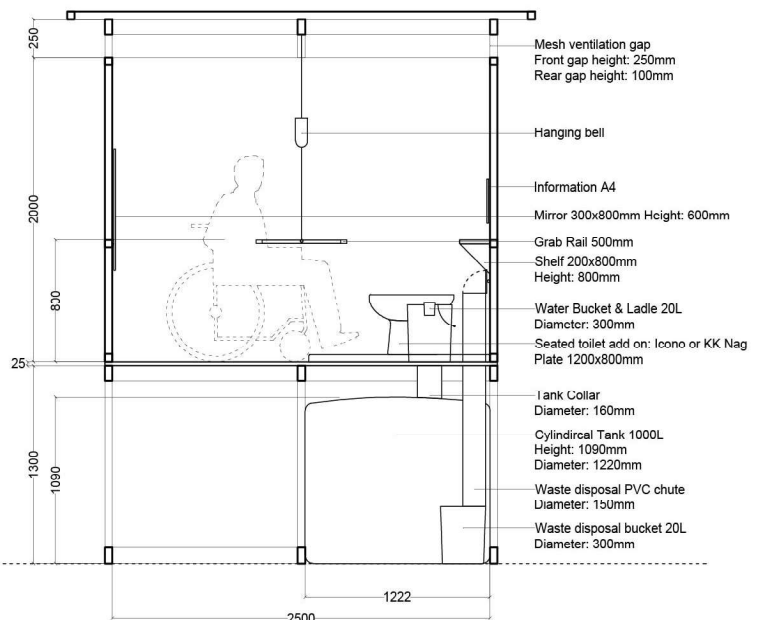


Raised Latrines Block
Isometric view

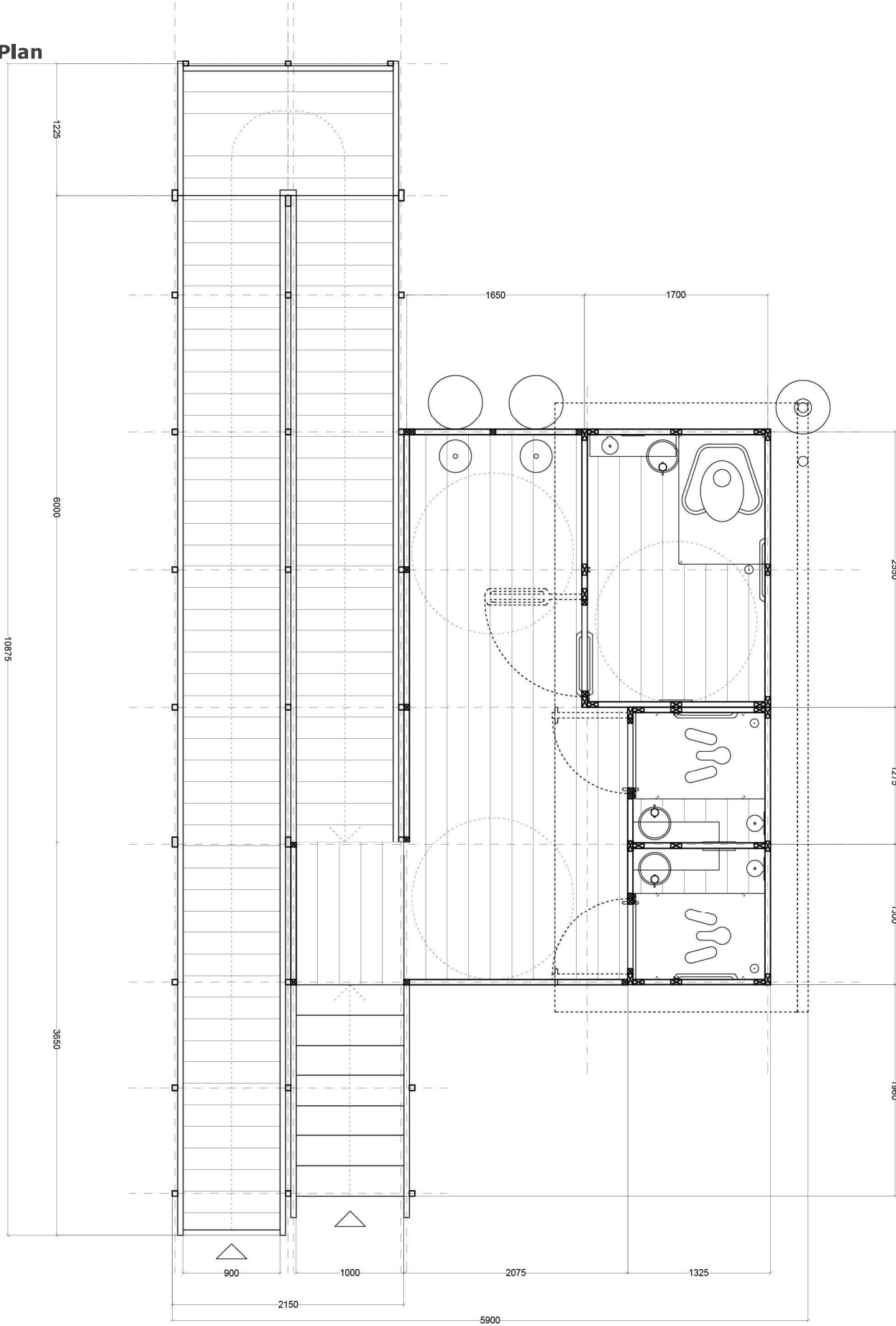
Latrine Cubicle
Plan 1:50**Latrine Cubicle PRM**
Plan 1:50**Latrine Cubicle**
Section 1:50**Latrine Cubicle PRM**
Section 1:50**Raised Latrines Cubicles**

Plan & Section

Print to size A4

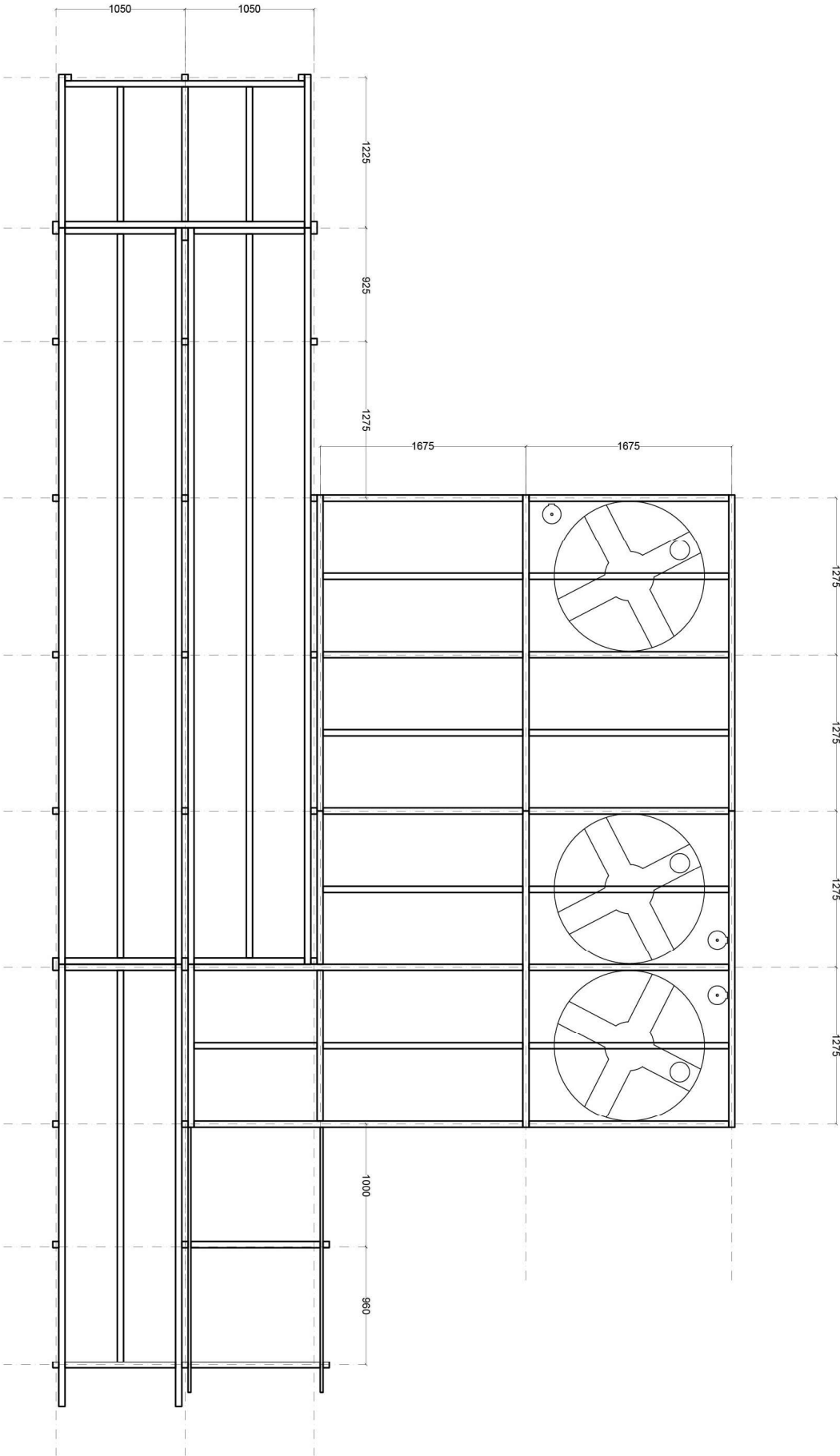
MARCH 2022

General Plan
1:50



Raised Latrines Block
Plans

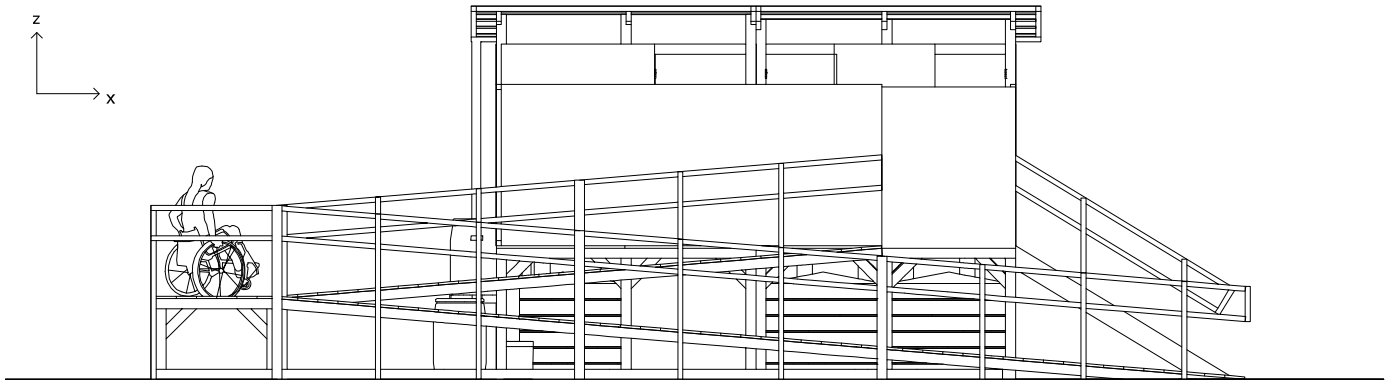
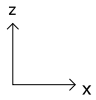
Support Structure
Plan
1:50



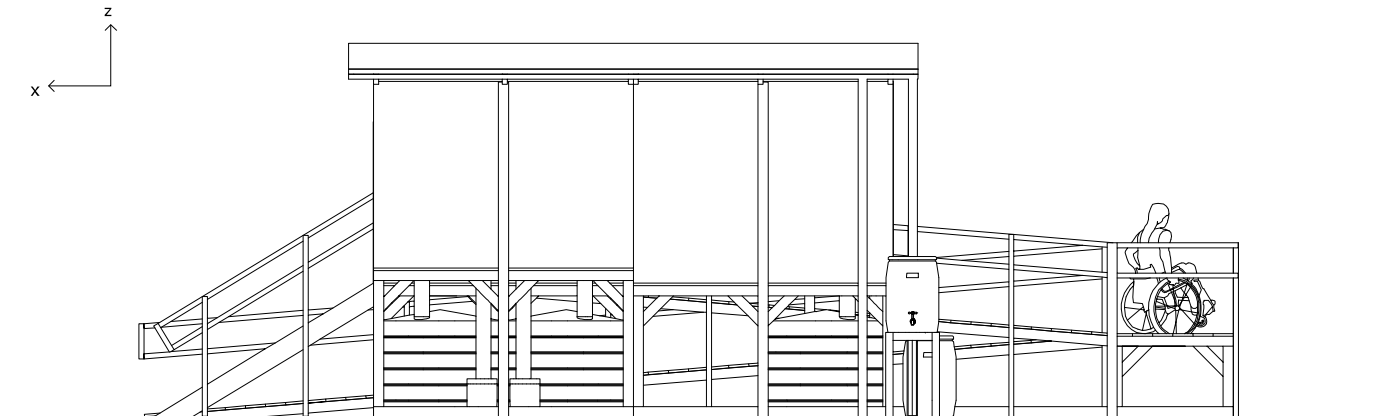
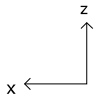
Raised Latrines Block
Plans

Front View

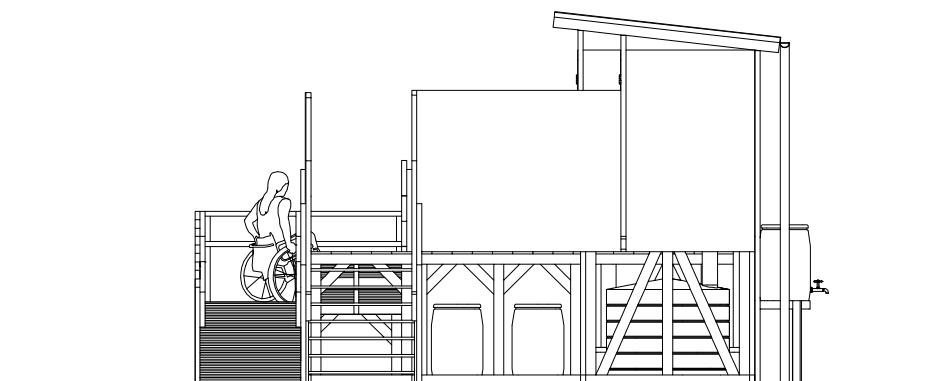
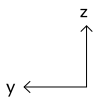
1:75

**Rear View**

1:75

**Side View**

1:75

**Raised Latrines Block**

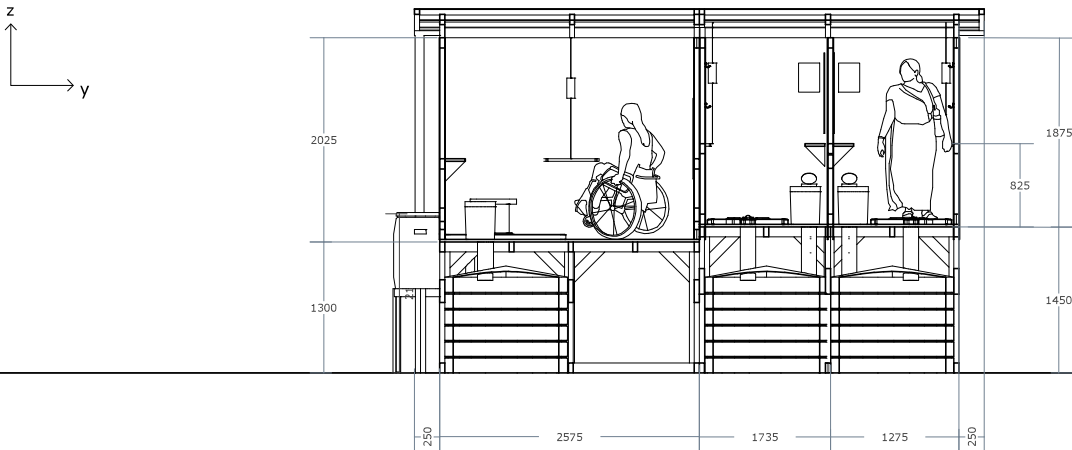
Elevation Views

Print to size A4

MARCH 2022

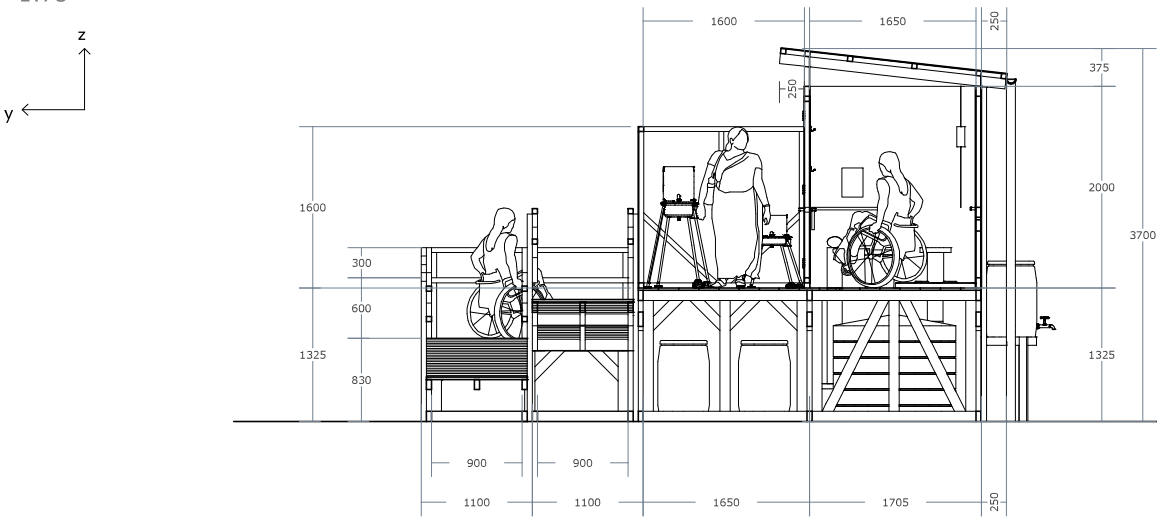
Longitudinal Section View

1:75



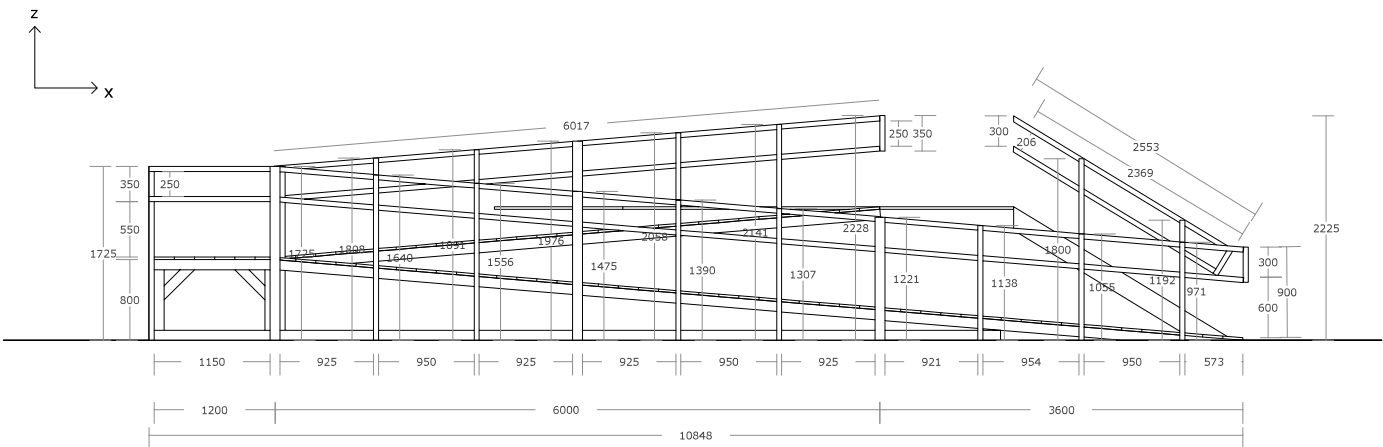
Cross Section View

1:75



Ramp & Stairs Elevation

1:75

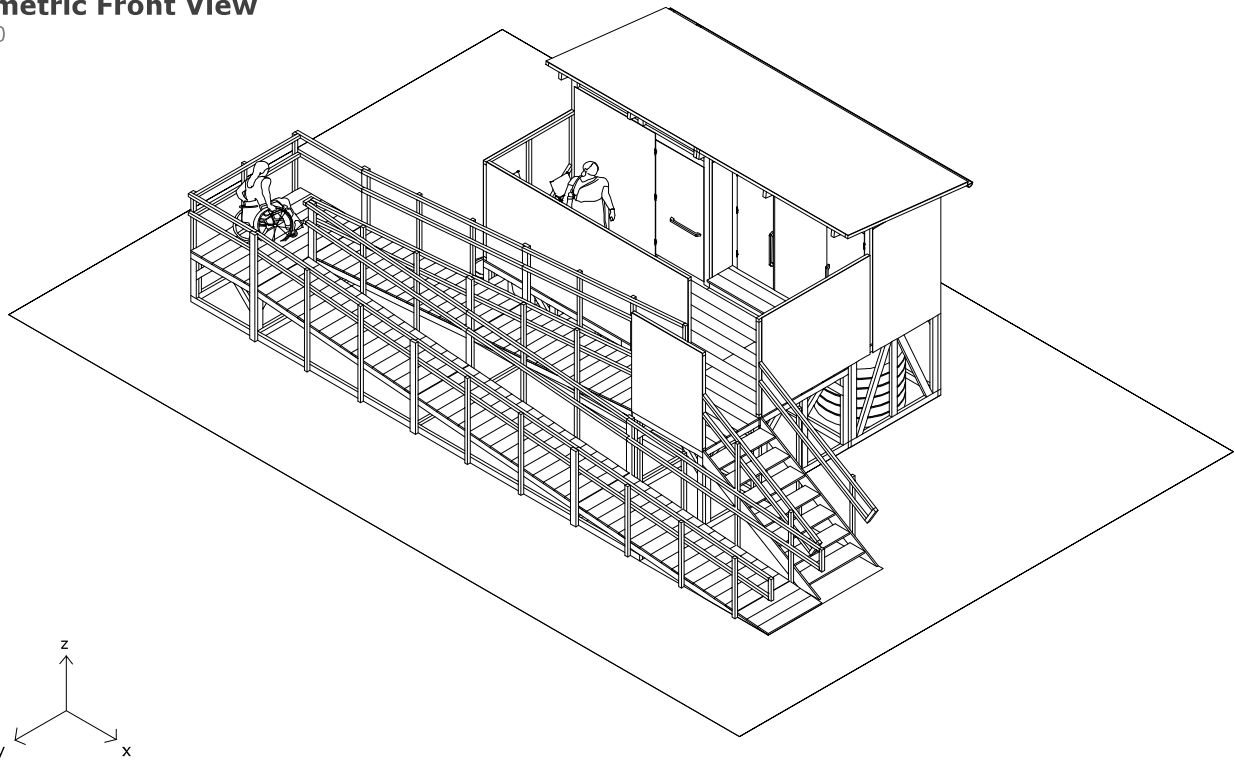


Raised Latrines Block

Section Views

Isometric Front View

1:100

**Raised Latrines Block**

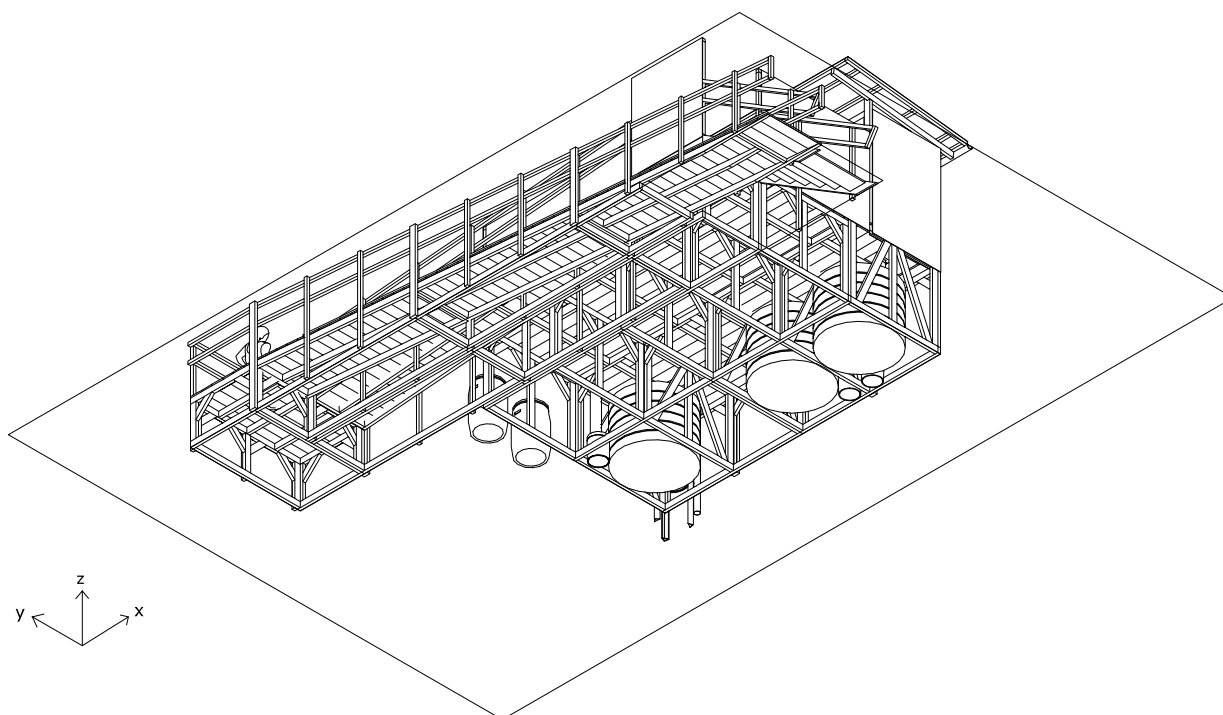
Isometric views

Print to size A4

MARCH 2022

Isometric Below View

1:100

**Raised Latrines Block**

Isometric views

Print to size A4

MARCH 2022

Panel List

Raised Latrine - RL

Panel reference code	Number required
RL 01	3
RL 02	3
RL 03	5
RL 04	2
RL 11	5
RL 12	2
RL 13	1
RL 21	1
RL 22	4
RL 31	2
RL 32	2
RL 41	4
RL 42	1

Panel reference code	Number required
RL 51	1
RL 52	2
RL 53	1
RL 54	3
RL 55	1
RL 56	1
RL 61	1
RL 62	1
RL 63	1
RL 64	1
RL 71	2
RL 72	2
RL 73	1

Plank List

Raised Latrine - RL

Plank reference code	Section	Length (mm)	Number required	Reference
RL P01	50x100	1625	6	Platform
RL P02	50x100	1575	2	Platform
RL P03	50x100	1200	1	Platform
RL P04	50x100	1225	1	Platform
RL P05	50x100	1000	1	Platform
RL P06	50x100	1100	3	Ramp
RL P07	50x100	Ramp height + 925mm	8	Ramp
RL P08	25x200	2560	2	Stair
RL P09	50x50	Ramp height + 925mm	30	Ramp
RL P10	25x200	1050	6	Stair
RL P11	50x50	Refer to ramp elevation		Handrail
RL P12	50x100	90	2	Cubicle frame
RL P13	50x100	3315	2	Cubicle frame
RL P14	50x100	2250	6	Roof support

If timber propping is needed:

Plank reference code	Section	Length (mm)	Number required	Reference
RL P15	50x100	1000	10	Timber propping
RL P16	50x100	1300	10	Timber propping
RL P17	50x100	1650	10	Timber propping

Raised Latrines Block

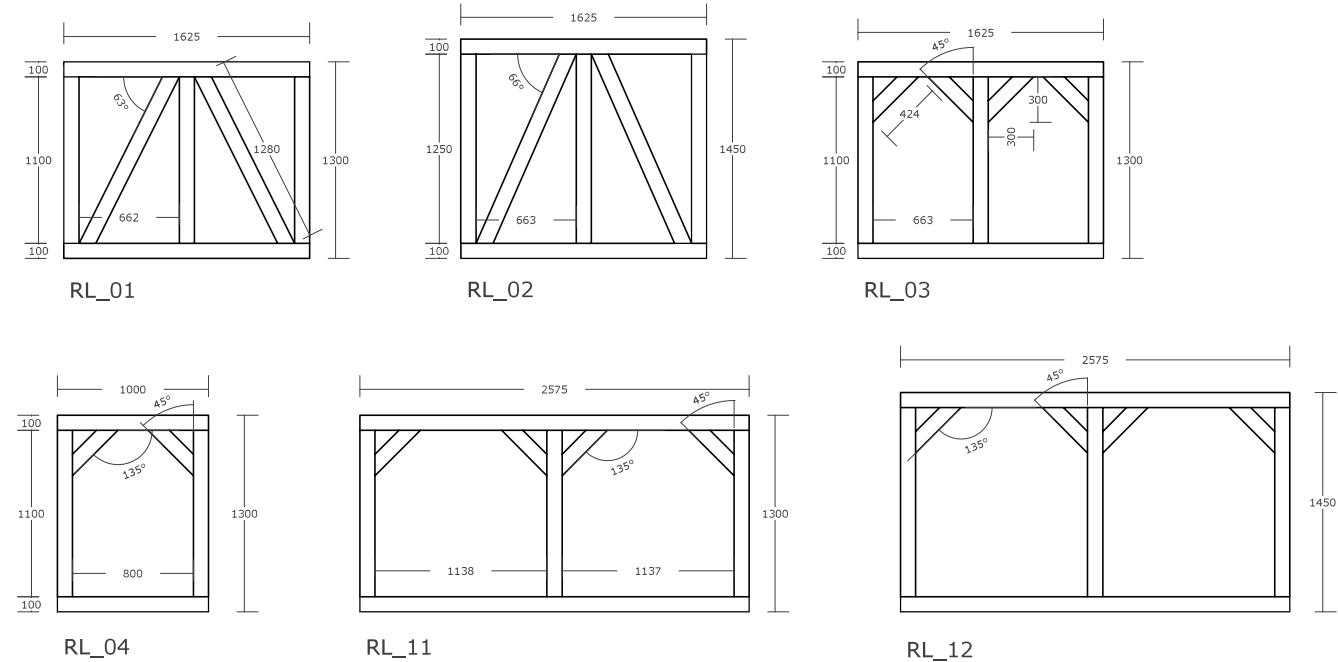
Lists of panels and planks

Print to size A4

MARCH 2022

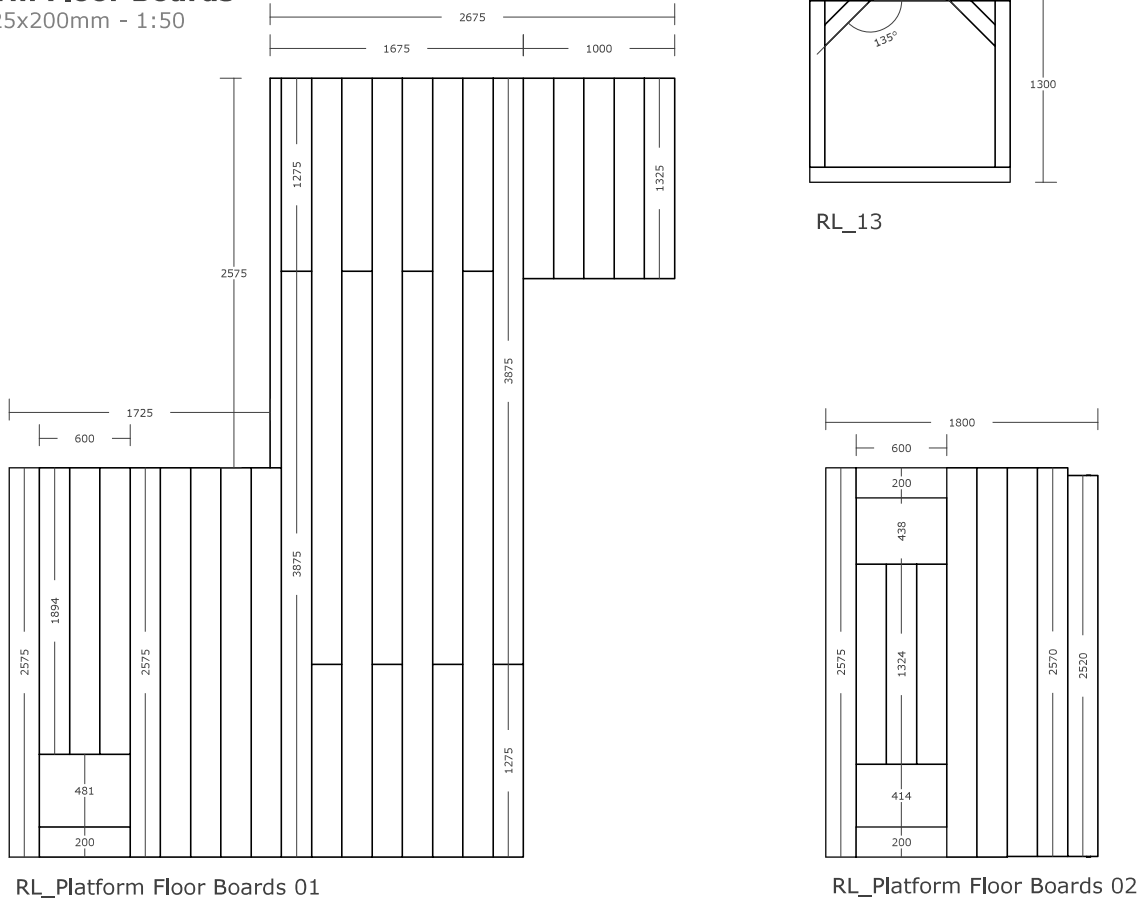
Platform Frames

Timber 50x100mm - 1:50



Platform Floor Boards

Timber 25x200mm - 1:50



Raised Latrines Block

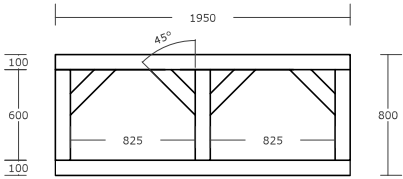
Details

Print to size A4

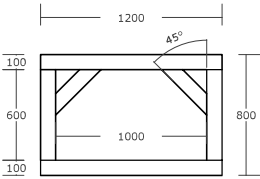
MARCH 2022

Ramp Frames

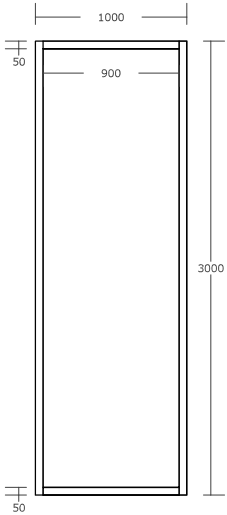
Timber 50x100mm - 1:50



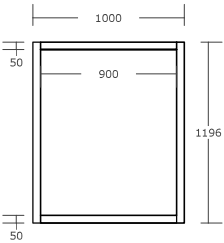
RL_31



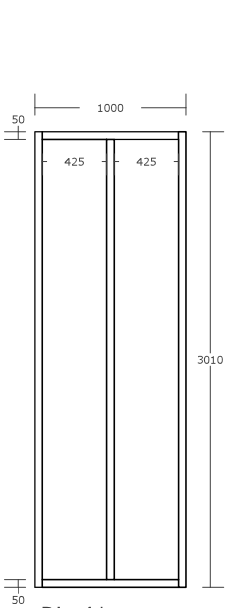
RL_32



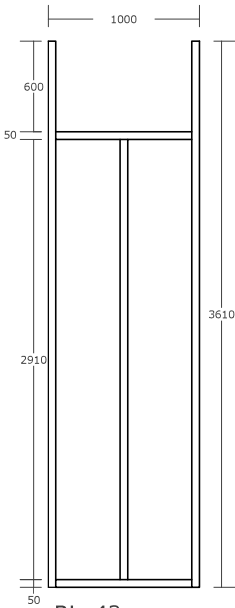
RL_21



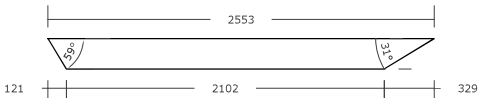
RL_22



RL_41



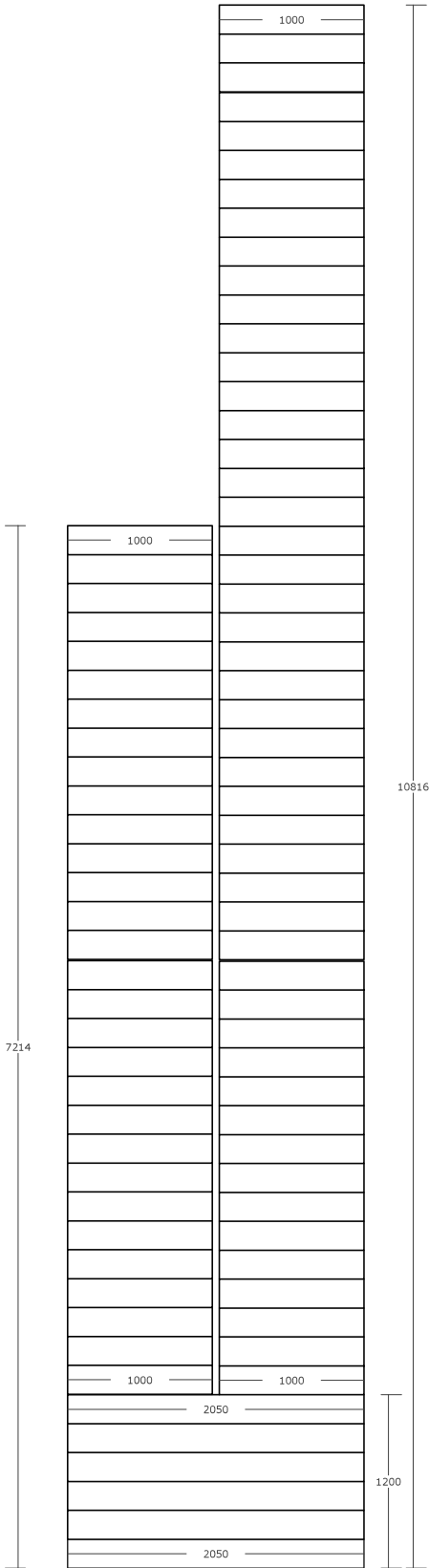
RL_42



RL_P08

Ramp Floor Boards

Timber 25x200mm - 1:50



RL_Ramp Floor Boards

Raised Latrines Block

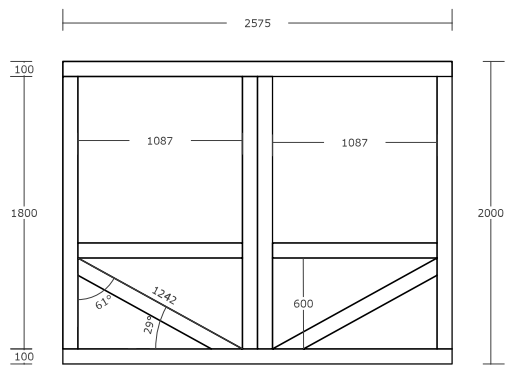
Details

Print to size A4

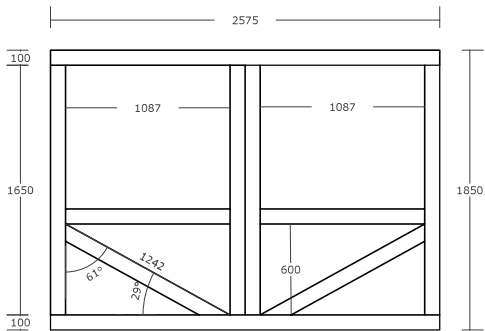
MARCH 2022

Cubicle Panels

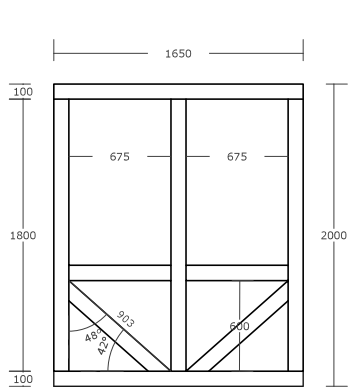
Timber 50x100mm - 1:50



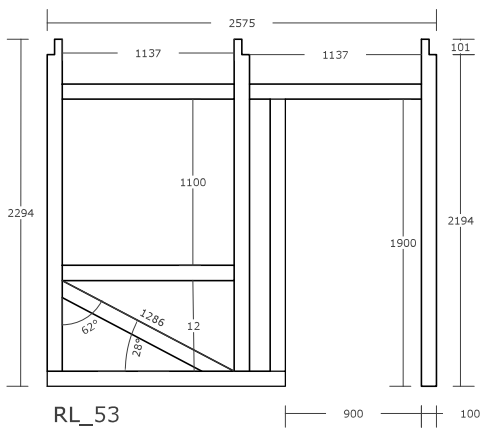
RL_51



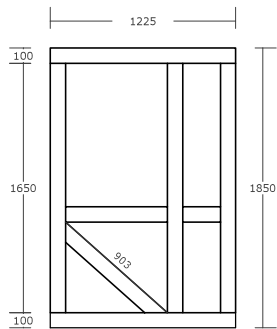
RL_56



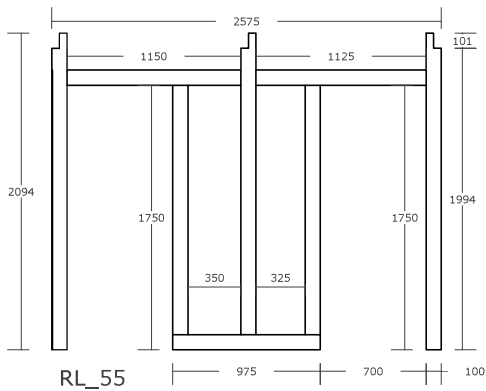
RL_52



RL_53



RL_54

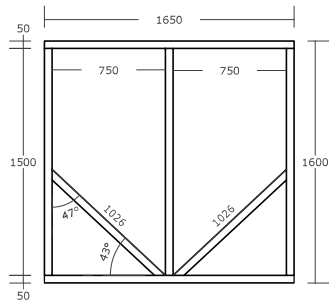


RL_55

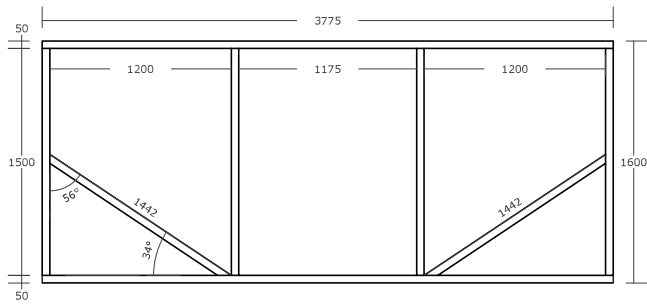
Raised Latrines Block
Details

Platform Screen Panels

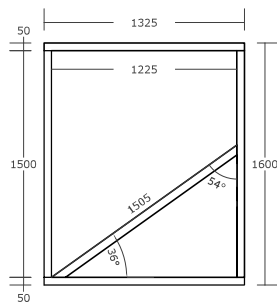
Timber 50x50mm - 1:50



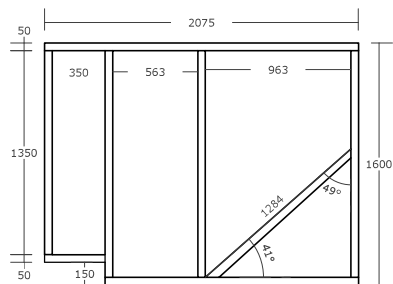
RL_61



RL_62



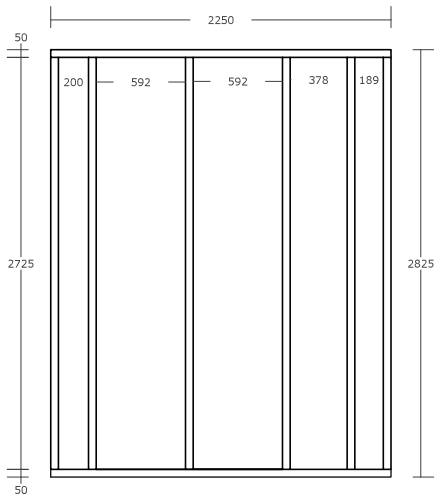
RL_63



RL_64

Roof Panels

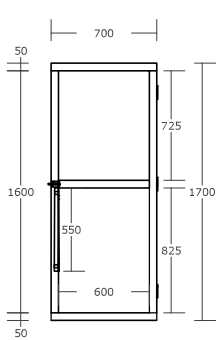
Timber 50x50mm



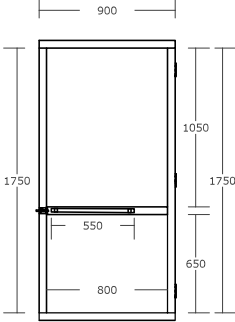
RL_71

Doors

Timber 50x50mm



RL_72



RL_73

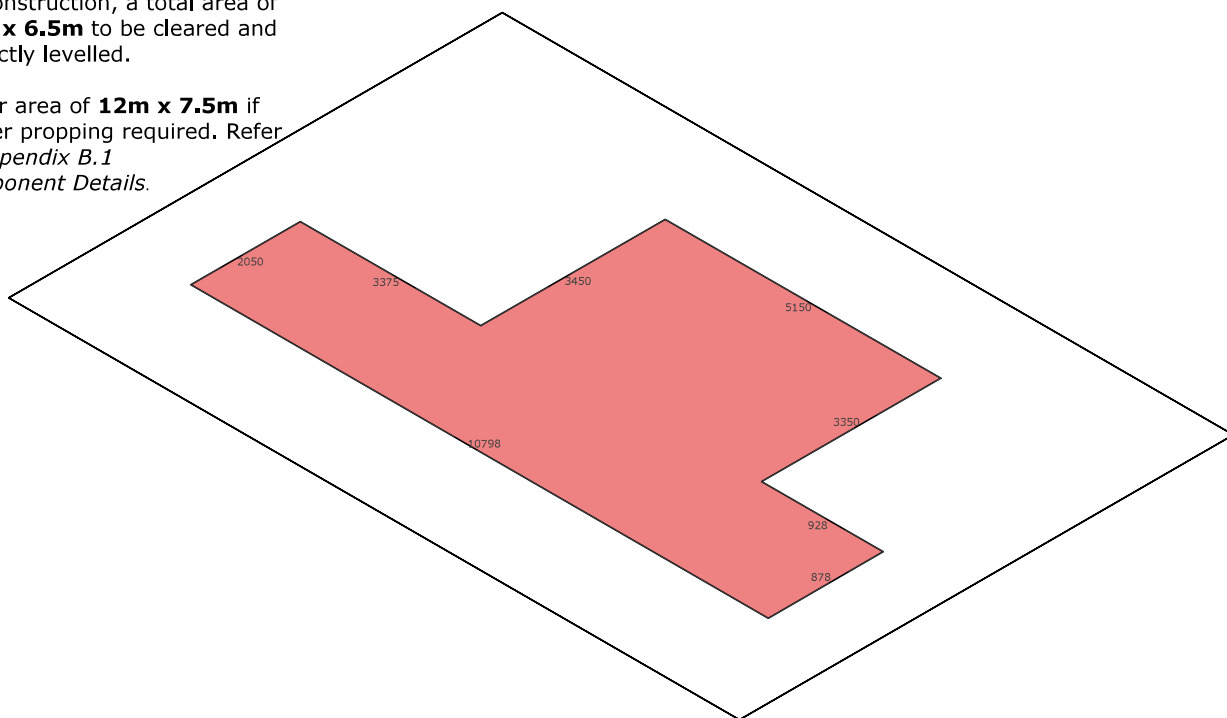
Raised Latrines Block

Details

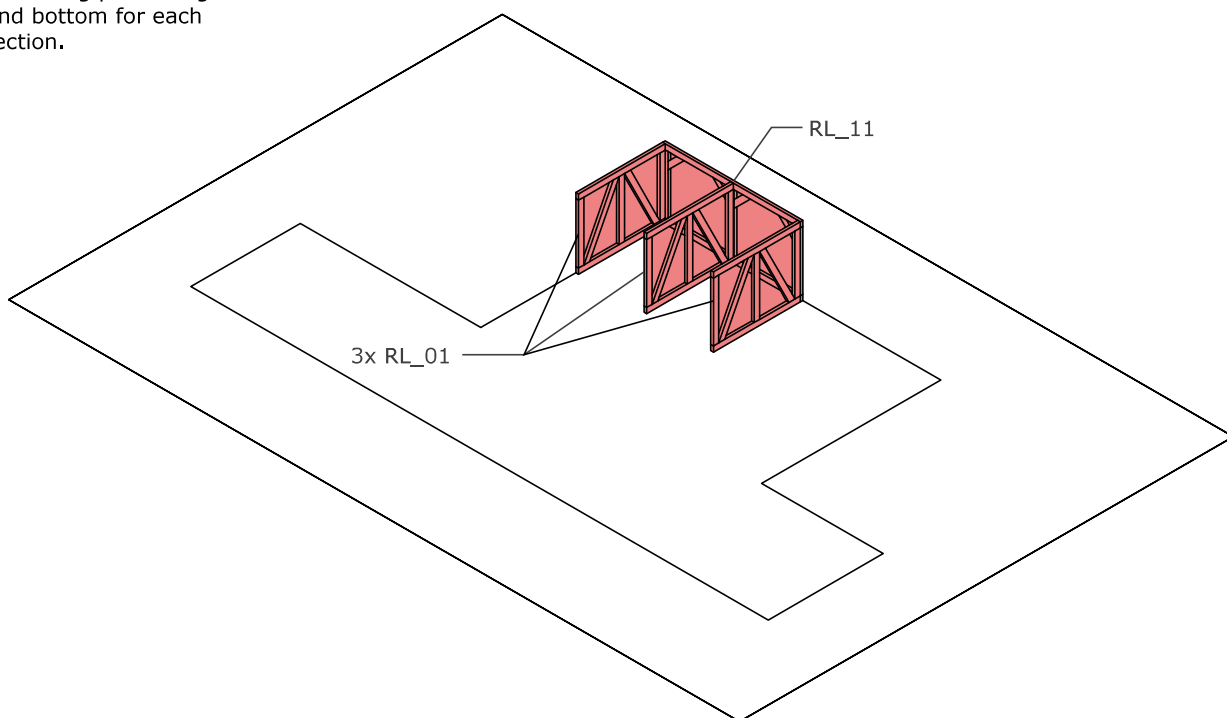
Step 1:
PLATFORM

- To accommodate the structure and a surround clearance of 1m for construction, a total area of **12m x 6.5m** to be cleared and perfectly levelled.

-Clear area of **12m x 7.5m** if timber propping required. Refer to *Appendix B.1 Component Details*.

**Step 2:**
PLATFORM

- Arrange **RL_11** panel along rear and 3x **RL_01** panels as shown bolting panels together at top and bottom for each connection.

**Raised Latrines Block**

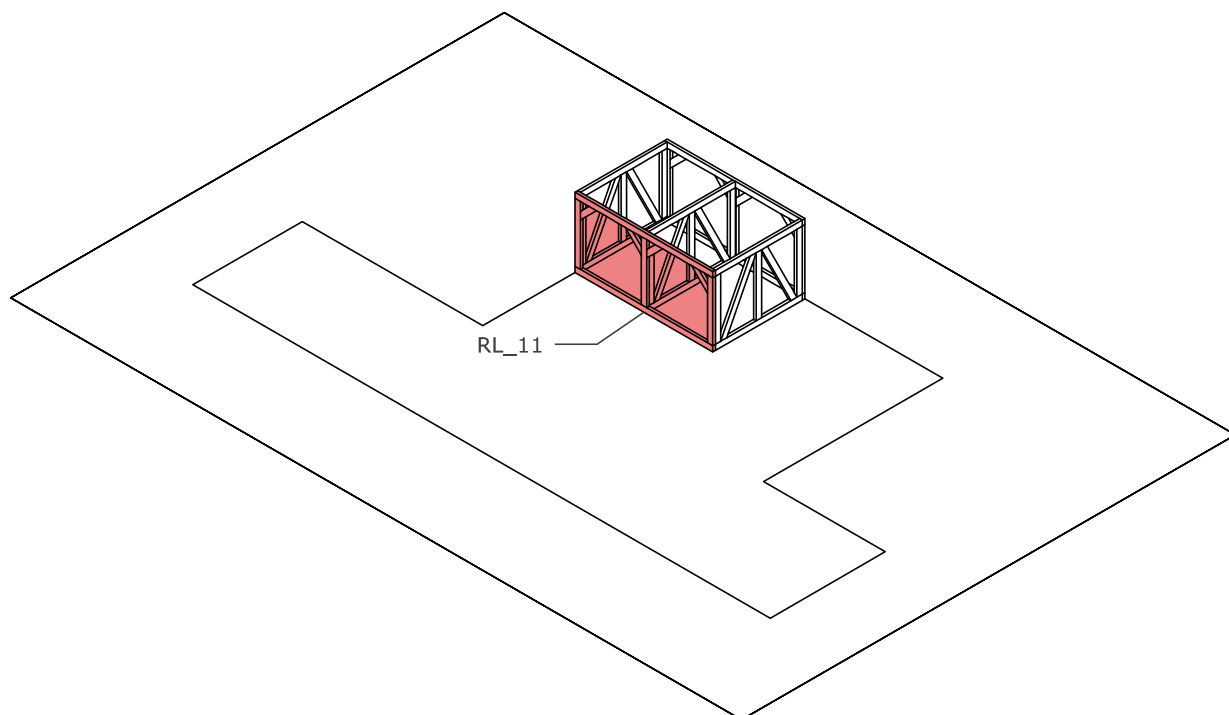
Step by step

Print to size A4

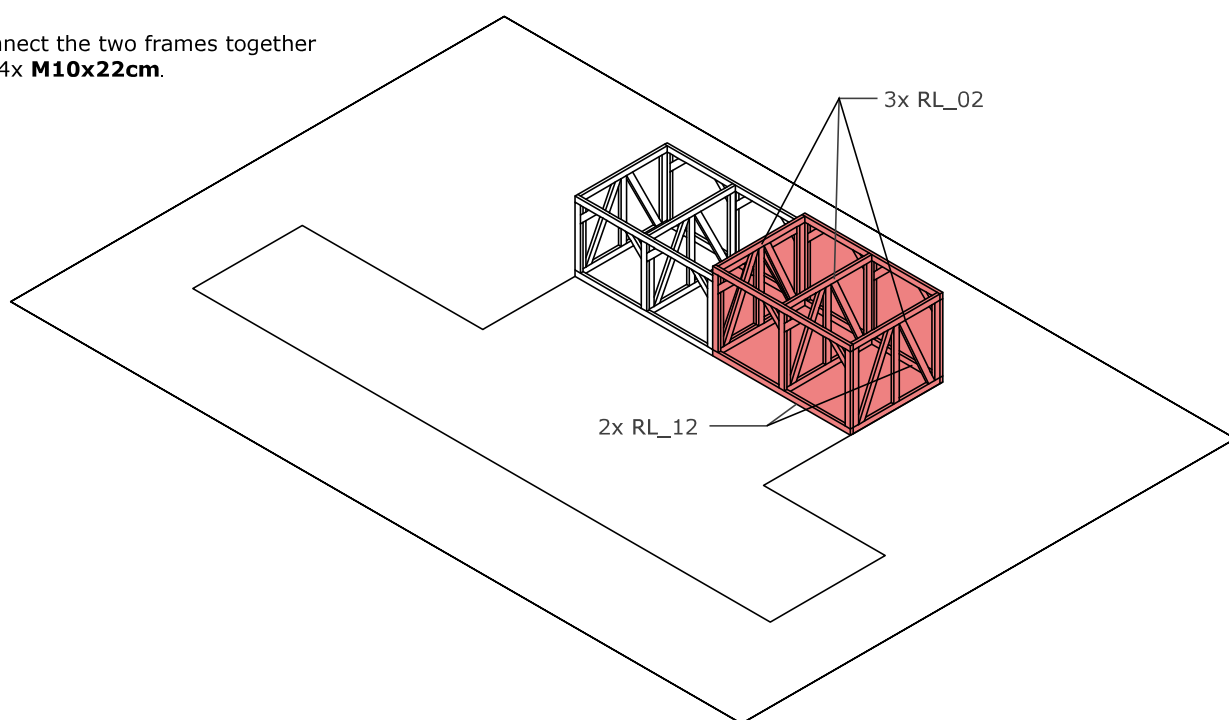
MARCH 2022

Step 3:
PLATFORM

- Bolt 1x **RL_11** panel to front of panels.

**Step 4:**
PLATFORM

- Repeat the same steps 2 and 3 for 2x **RL_12** panels and 3x **RL_02** panels.
- Connect the two frames together with 4x **M10x22cm**.

**Raised Latrines Block**

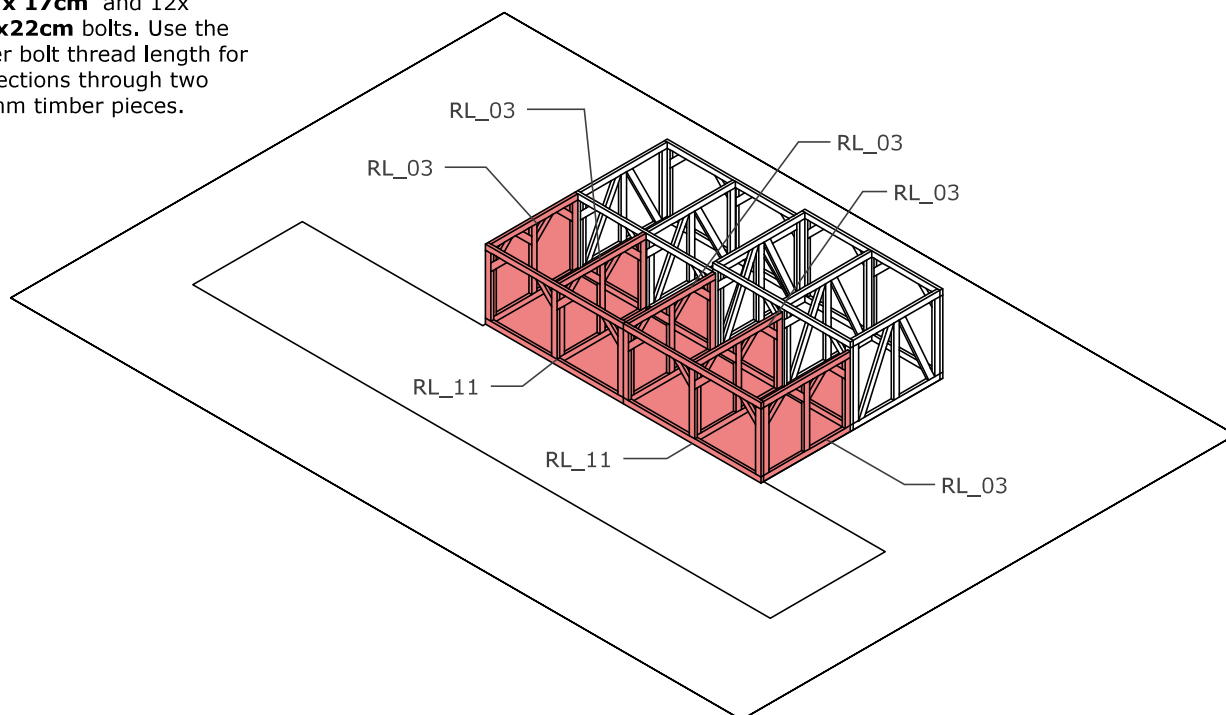
Step by step

Print to size A4

MARCH 2022

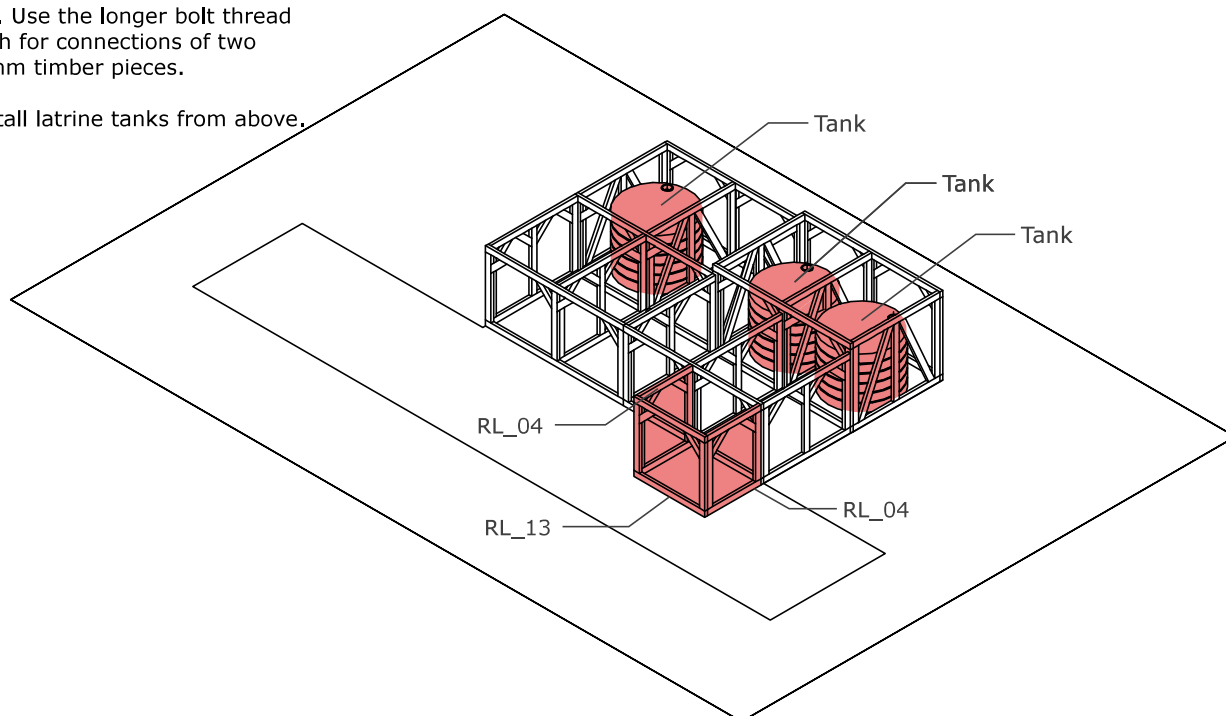
Step 5:
PLATFORM

- Bolt 5x **RL_03** panels and then add 2x **RL_11** using 4x **M10 x 17cm** and 12x **M10x22cm** bolts. Use the longer bolt thread length for connections through two 100mm timber pieces.

**Step 6:**
PLATFORM

- Add 2x **RL_04** panels and 1x **RL_13** panels with 4x **M10x22cm** and 4x **M10x17cm** bolts. Use the longer bolt thread length for connections of two 100mm timber pieces.

- Install latrine tanks from above.

**Raised Latrines Block**

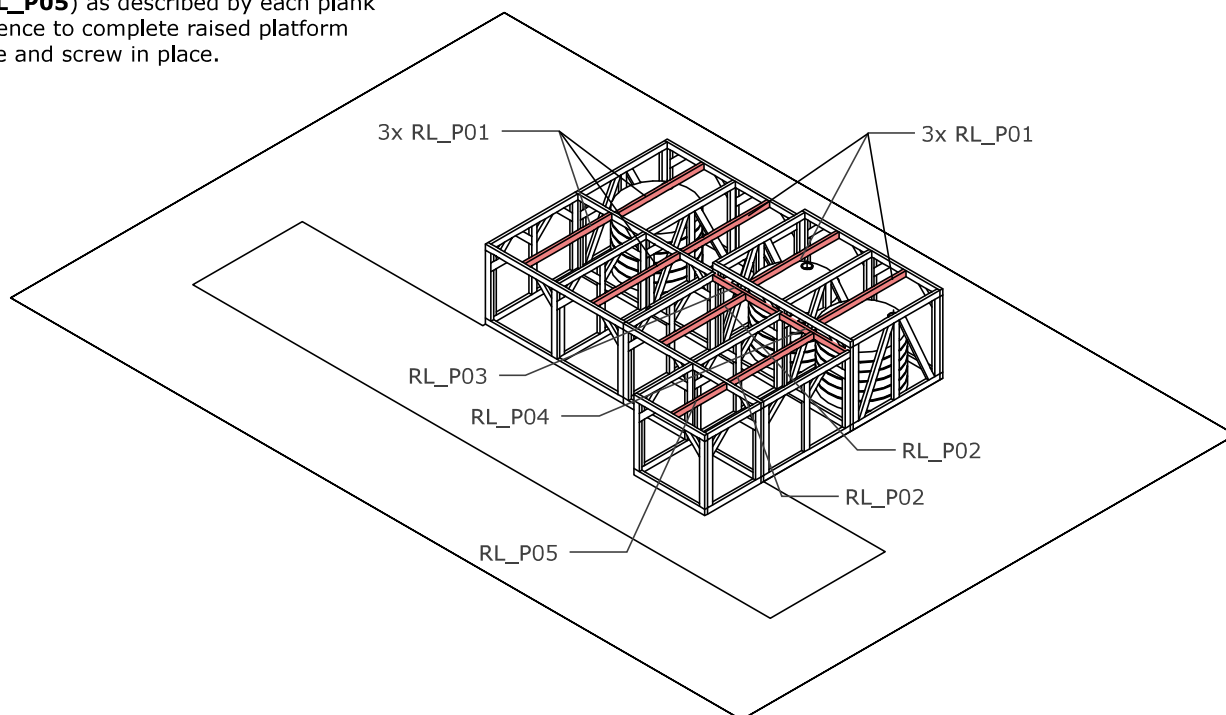
Step by step

Print to size A4

MARCH 2022

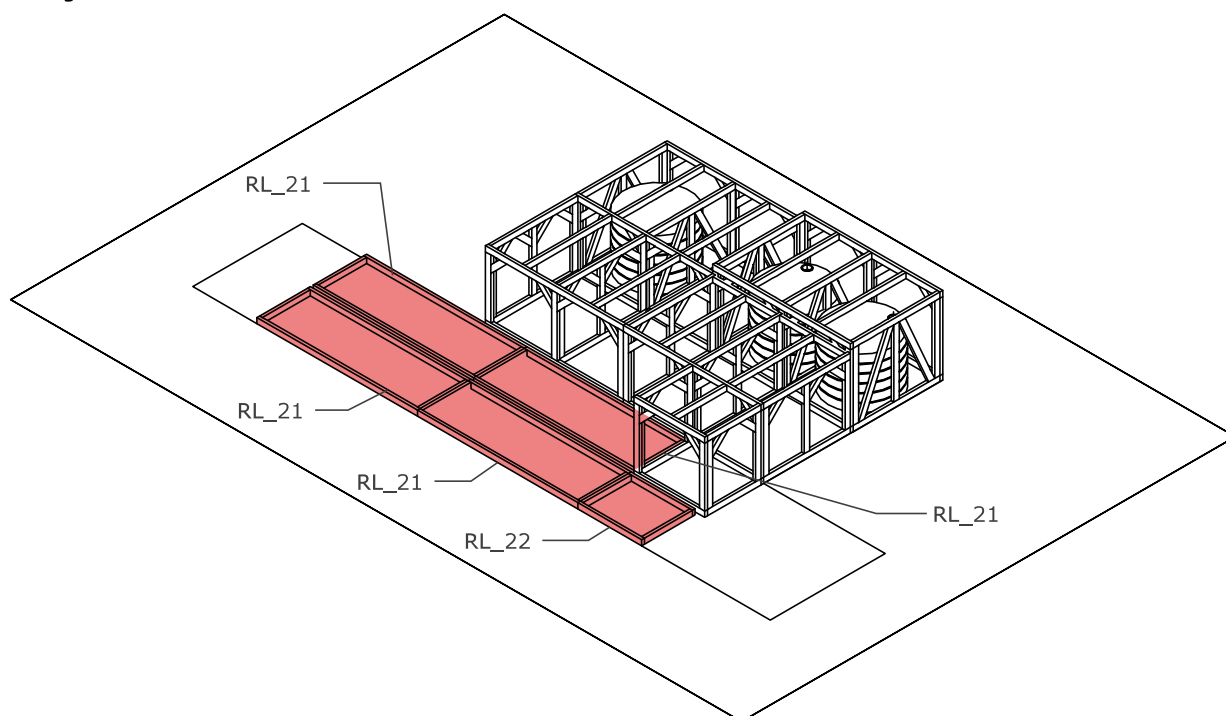
Step 7: PLATFORM

- Add 11x timber planks (6x **RL_P01**, 3x **RL_P02**, 1x **RL_P03**, 1x **RL_P04** and 1x **RL_P05**) as described by each plank reference to complete raised platform frame and screw in place.



Step 8: RAMP & STAIRS

- Layout and bolt together 4x **RL_21** and 1x **RL_22** panels on the ground and bolt together.



Raised Latrines Block

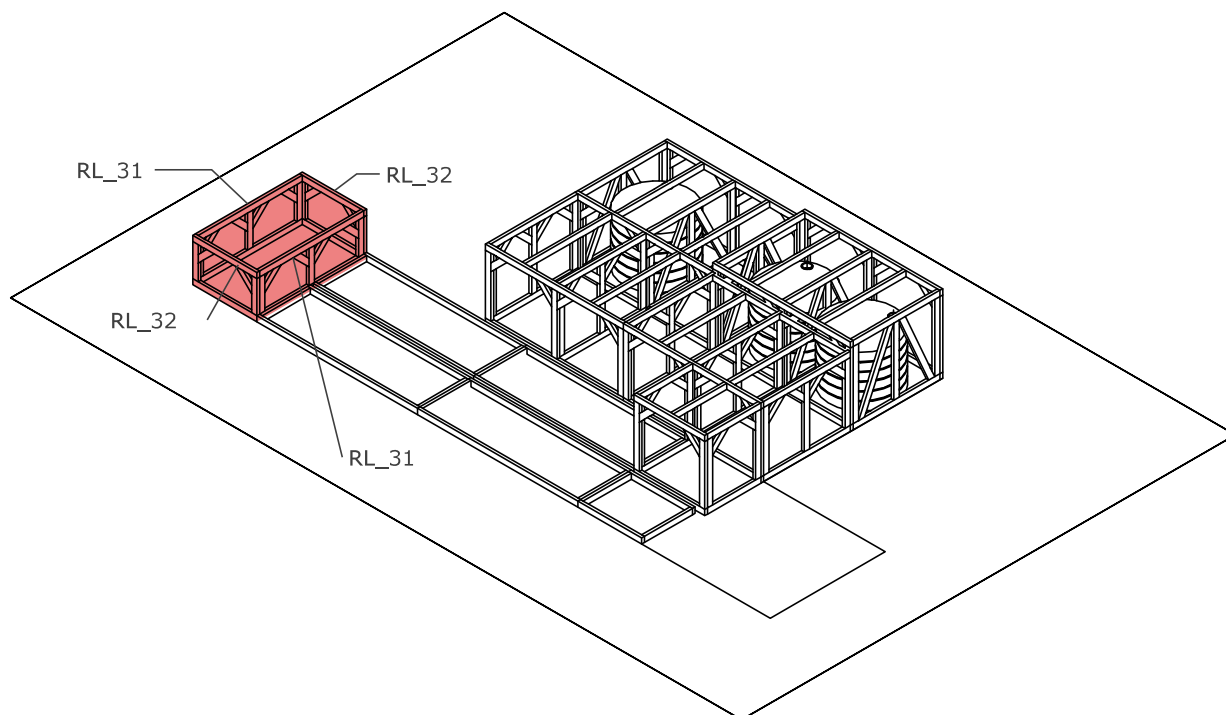
Step by step

Print to size A4

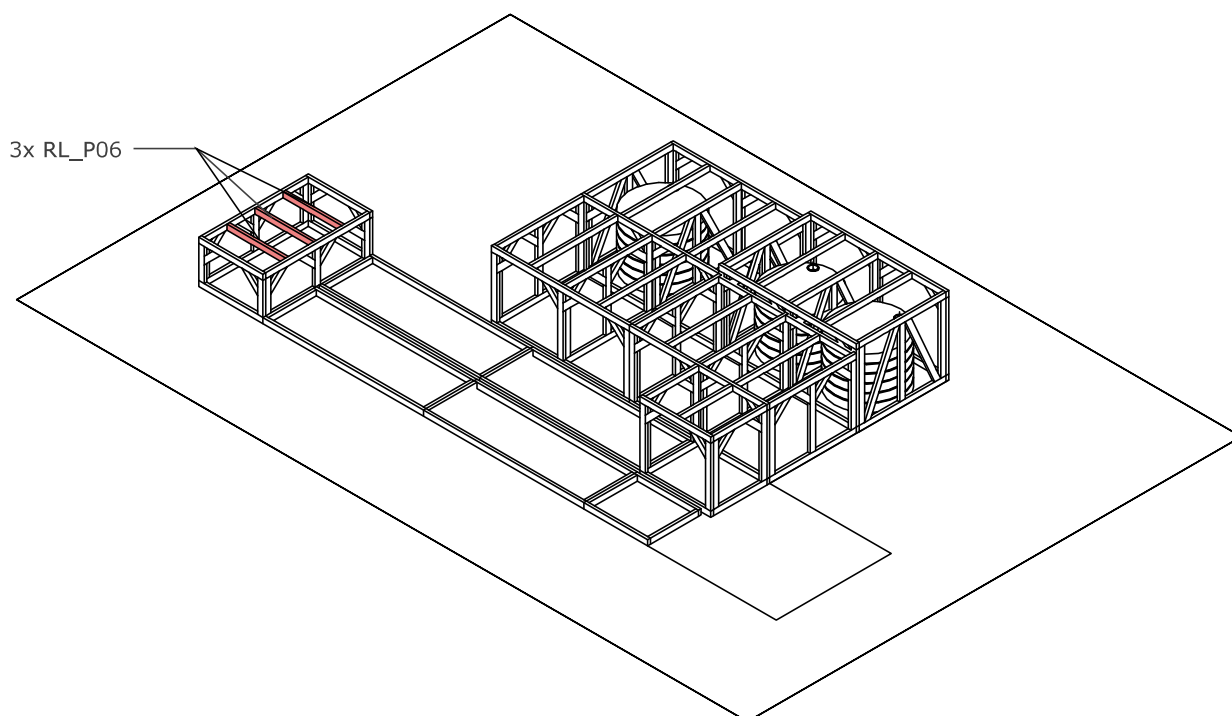
MARCH 2022

Step 9:
RAMP & STAIRS

- Bolt together 2x **RL_31** and 2x **RL_32** panels as shown.

**Step 10:**
RAMP & STAIRS

- Install 3x **RL_P06** wooden studs as shown and screw in place.

**Raised Latrines Block**

Step by step

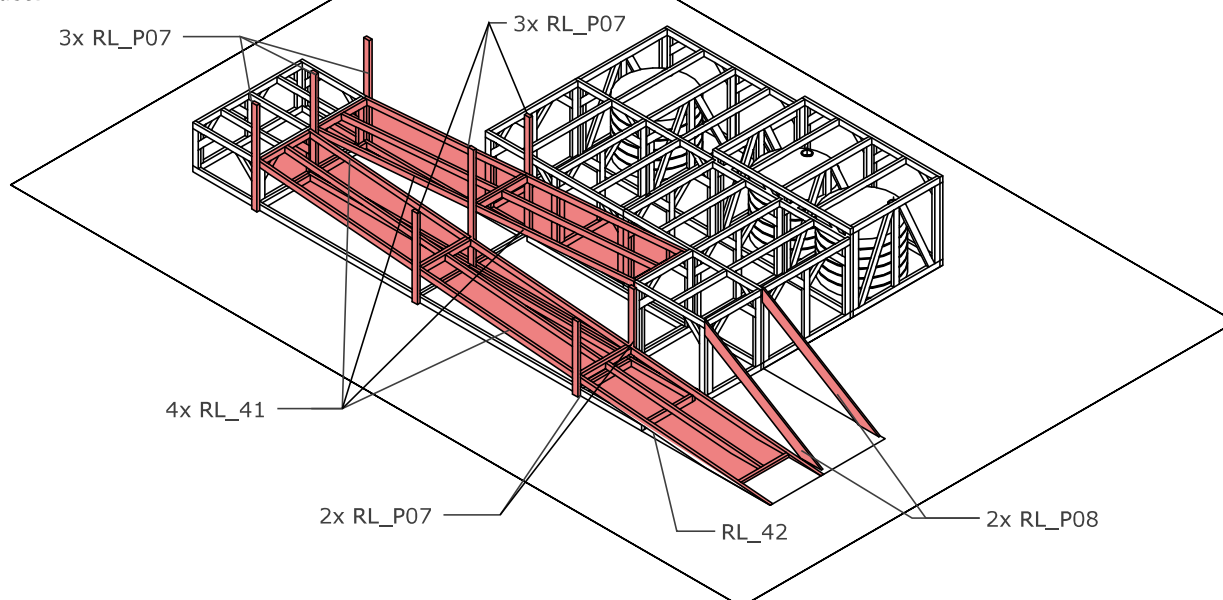
Print to size A4

MARCH 2022

Step 11: RAMP & STAIRS

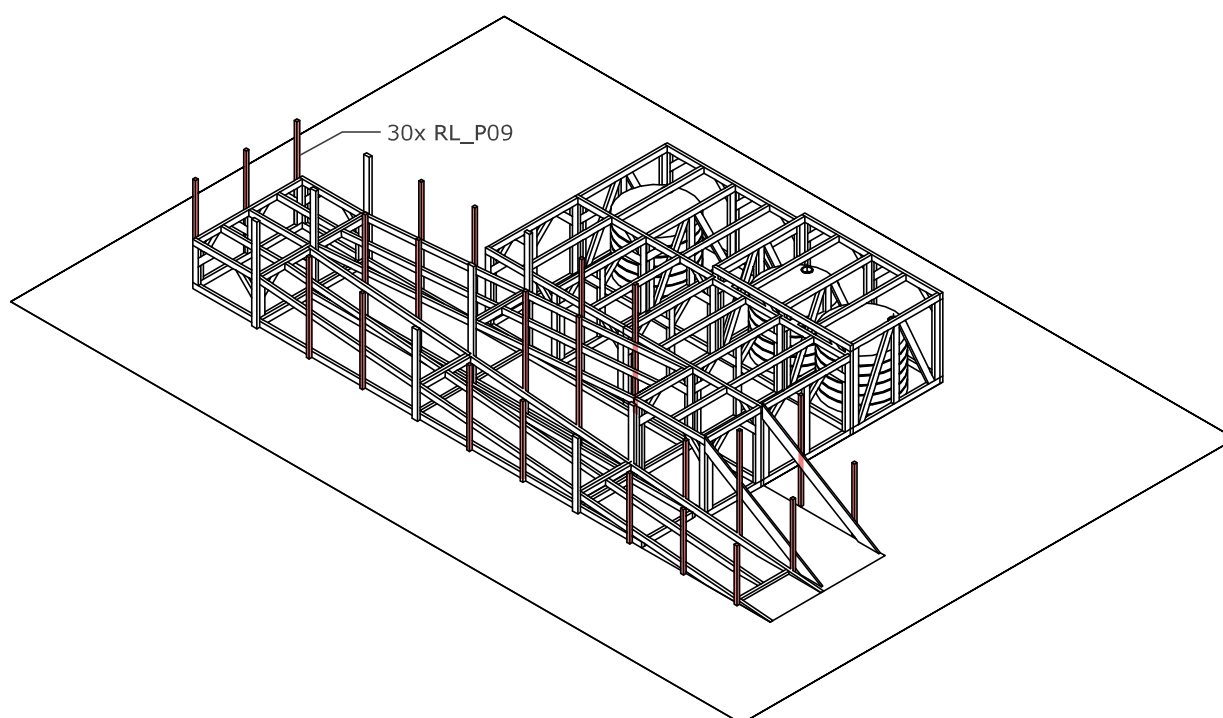
- First install 8x **RL_P07** wooden posts and then install 4x **RL_41** panels and 1x **RL_42**.

- Install 2 x **RL_P08** wooden planks for the sides of the stairs and screw in place.



Step 12: RAMP & STAIRS

- Install 30x **RL_P09** vertical posts for the stairs and the ramp and screw in place.



Raised Latrines Block

Step by step

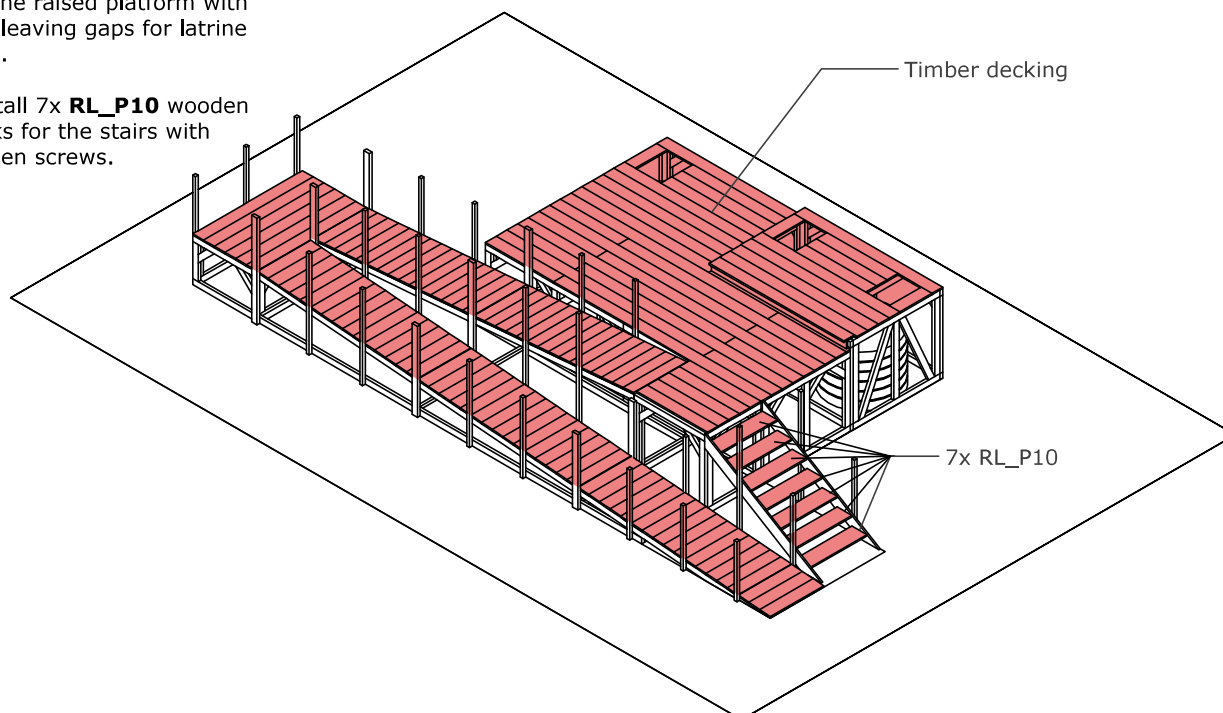
Print to size A4

MARCH 2022

Step 13: TIMBER DECKING

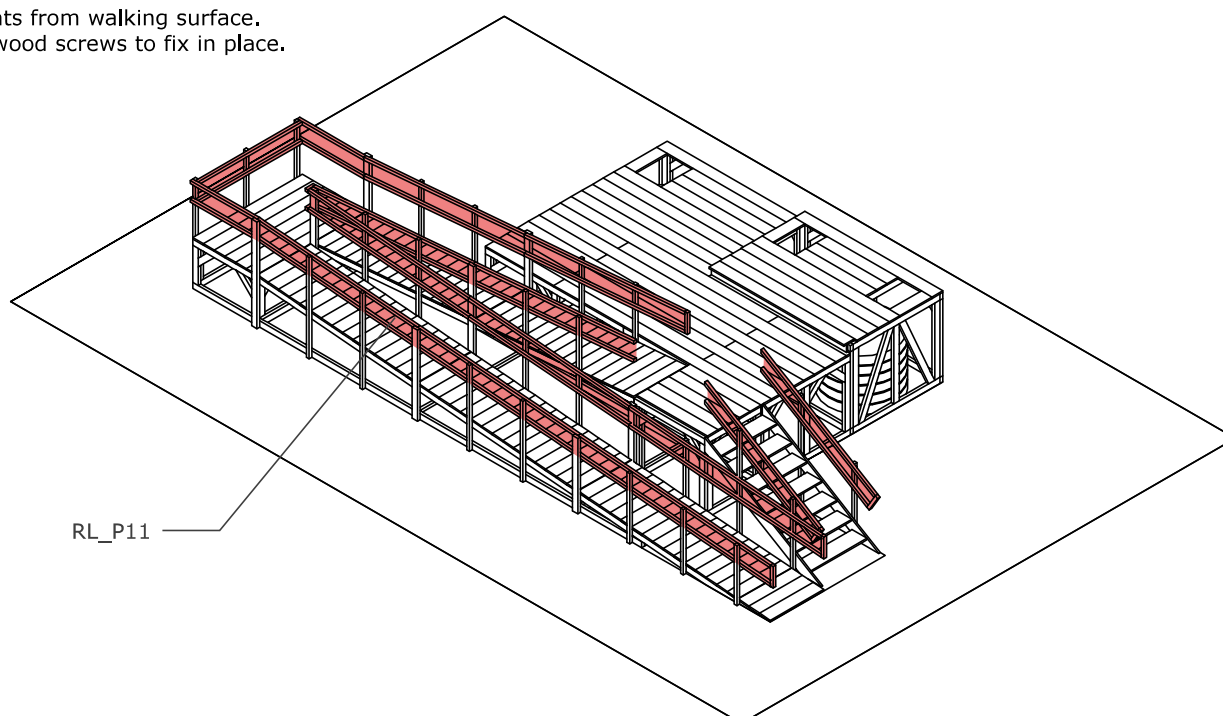
- Install **timber decking planks** across all of the ramp and the raised platform with nails leaving gaps for latrine holes.

- Install 7x **RL_P10** wooden planks for the stairs with wooden screws.



Step 14: RAILINGS

- Install handrail (**RL_P11**) around perimeter of the ramp and the stairs at 600 and 900mm heights from walking surface. Use wood screws to fix in place.



Raised Latrines Block

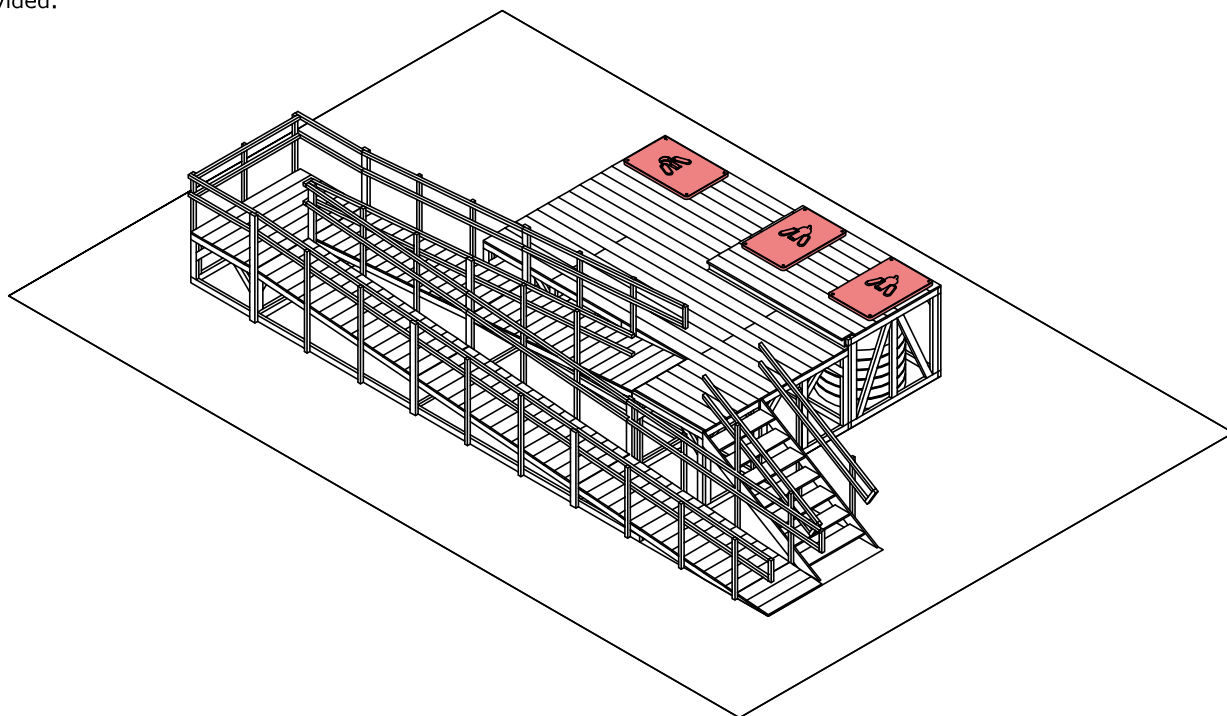
Step by step

Print to size A4

MARCH 2022

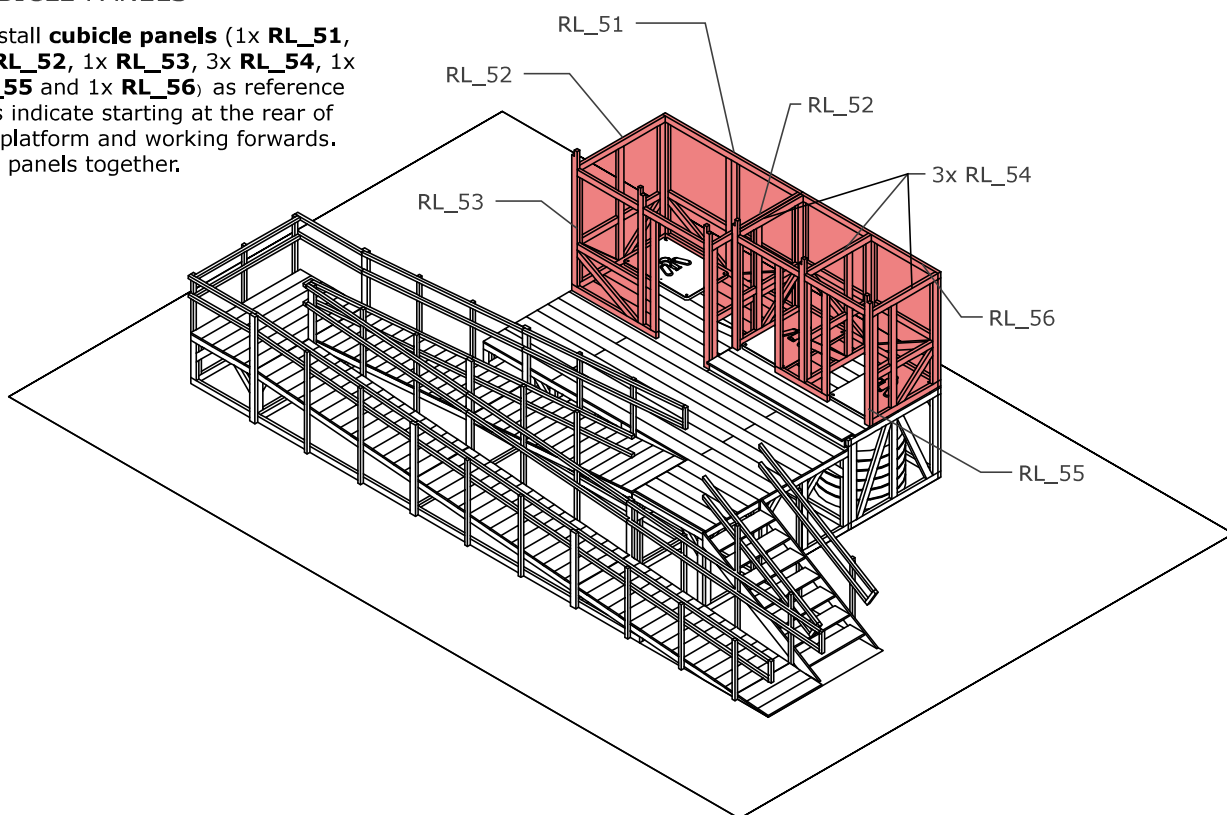
Step 15: LATRINE SLABS

- Place 3x **latrine slabs** in each location and bolt into place with fixing bolts provided.



Step 16: CUBICLE PANELS

- Install **cubicle panels** (1x **RL_51**, 2x **RL_52**, 1x **RL_53**, 3x **RL_54**, 1x **RL_55** and 1x **RL_56**) as reference tags indicate starting at the rear of the platform and working forwards. Bolt panels together.



Raised Latrines Block

Step by step

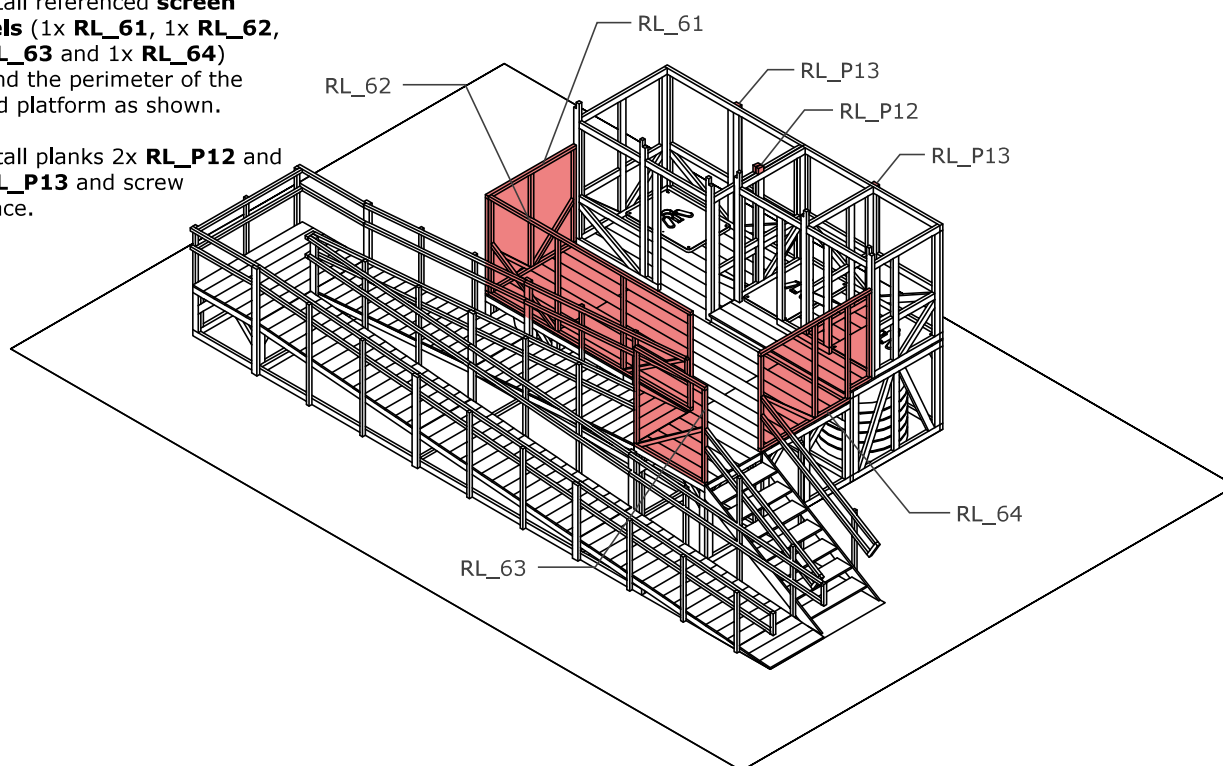
Print to size A4

MARCH 2022

Step 17: SCREEN PANELS

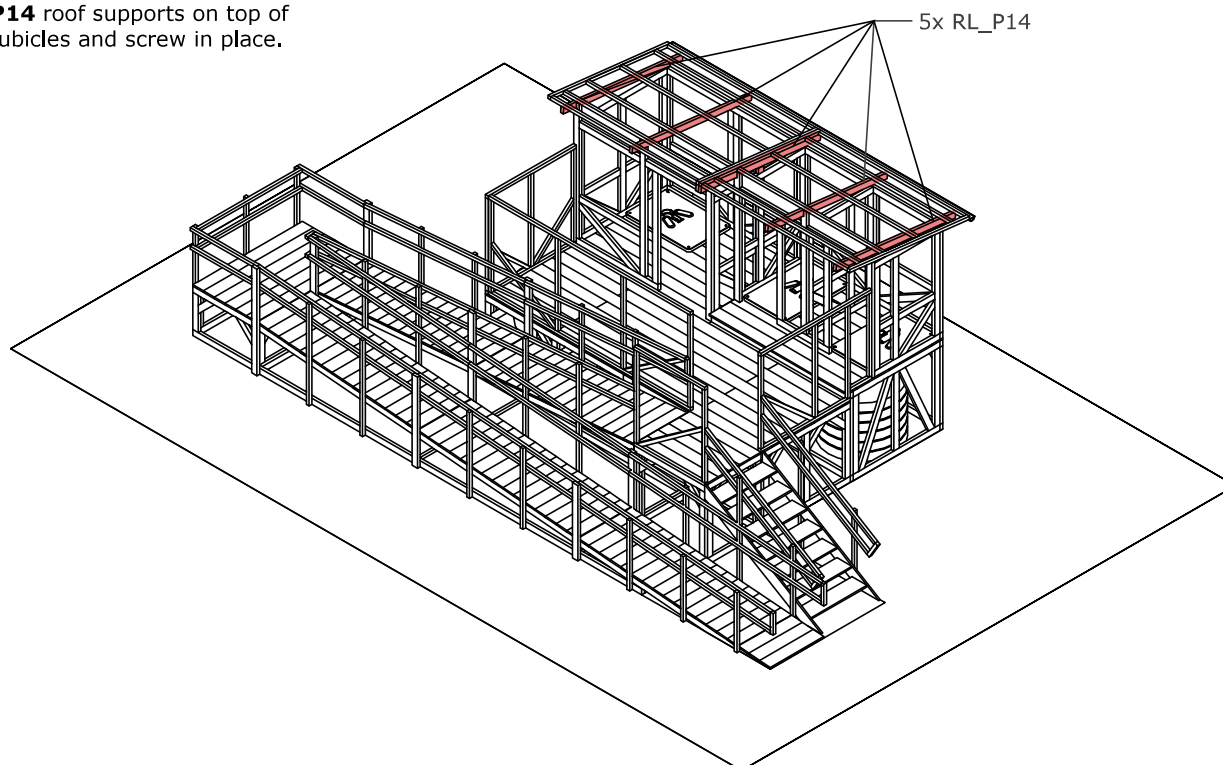
- Install referenced **screen panels** (1x **RL_61**, 1x **RL_62**, 1x **RL_63** and 1x **RL_64**) around the perimeter of the raised platform as shown.

- Install planks 2x **RL_P12** and 2x **RL_P13** and screw in place.



Step 18: ROOF

- Install 6x horizontal timber **RL_P14** roof supports on top of the cubicles and screw in place.



Raised Latrines Block

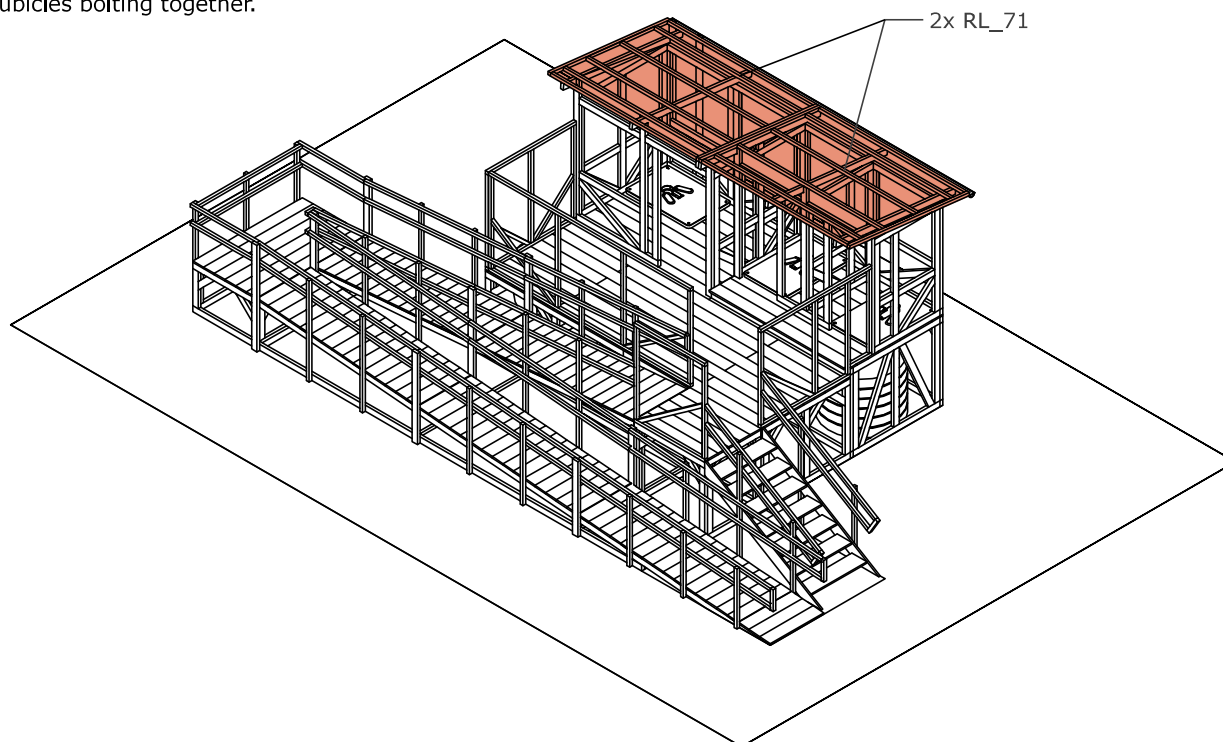
Step by step

Print to size A4

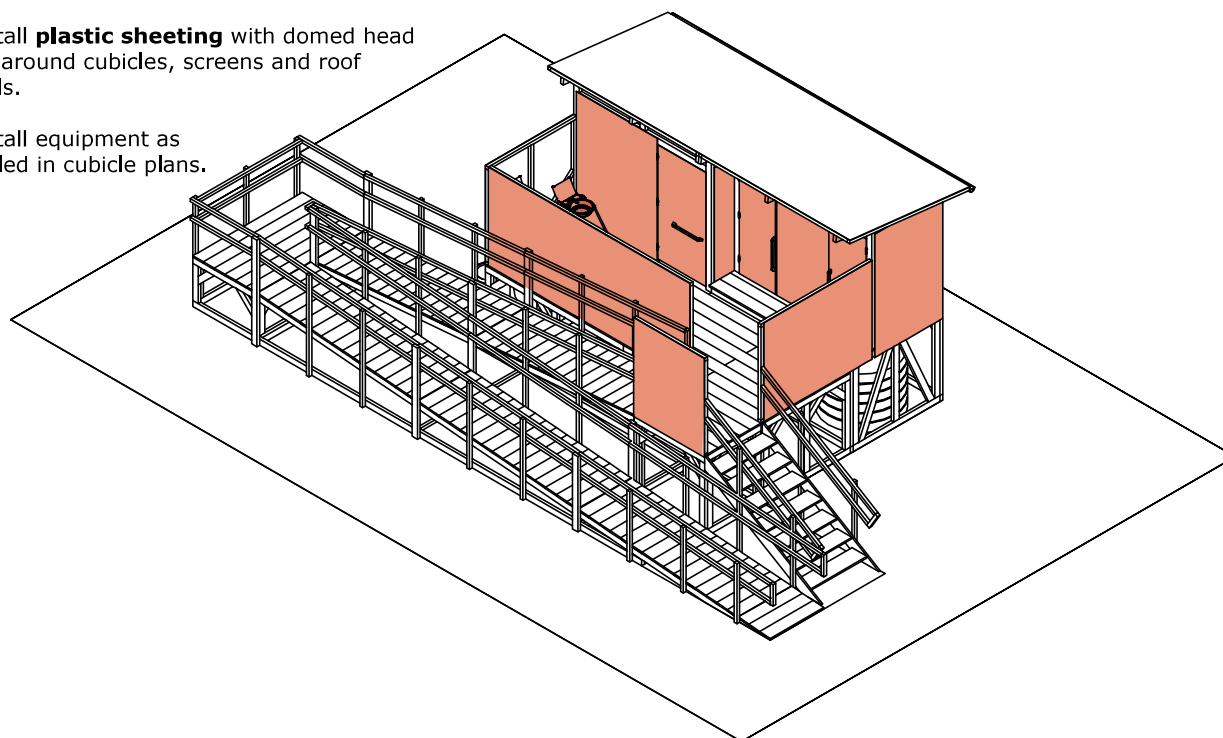
MARCH 2022

Step 19:**ROOF**

- Install 2x **RL_71** roof panels to top of the cubicles bolting together.

**Step 20:****CUBICLE PANELS**

- Install cubicle doors x2 **RL_72** and 1x **RL_73**
- Install **plastic sheeting** with domed head nails around cubicles, screens and roof panels.
- Install equipment as detailed in cubicle plans.

**Raised Latrines Block**

Step by step

Print to size A4

MARCH 2022